
BarTender Track & Trace

BarTender Track & Trace – Release 12.3

June 2026



Contents

- Overview** 3
- Settings Dashboard: Global View and Inventory Settings** 4
 - Benefits 5
 - Centralized Configuration Visibility 5
 - Controlled Administrative Access 5
 - More Accurate Inventory Representation 5
 - Consistent Tenant Initialization 5
 - Improved Operational Flexibility 6
- Location Management: Map and Zone Management** 7
 - Benefits 8
 - Visual Site Configuration 8
 - Improved Zone Management 8
 - Faster Facility Setup 8
 - Enhanced Operational Navigation 9
 - Controlled Lifecycle Management 9
 - Better Multi-Site Visibility 9
 - Operational Flexibility 9
- Inventory API: Public Inventory Snapshot and Analytics Access** 10
 - Benefits 11
 - Consistent Inventory Visibility 11
 - Expanded Reporting Flexibility 11
 - Improved External System Integration 11
 - Reduced Manual Reconciliation Effort 11
 - Operational Data Accessibility 12
 - Scalable Inventory Analysis 12
 - Improved Developer Adoption 12
- Related Documentation** 13

Overview

With the 12.3 update to Track & Trace, Seagull Software continues to improve operational visibility, configuration management, and workflow capabilities across the platform. The What's New section describes the most significant features and enhancements included in this release.

BarTender Track & Trace 12.3 release notes are available on the online [BarTender Support Center](#).

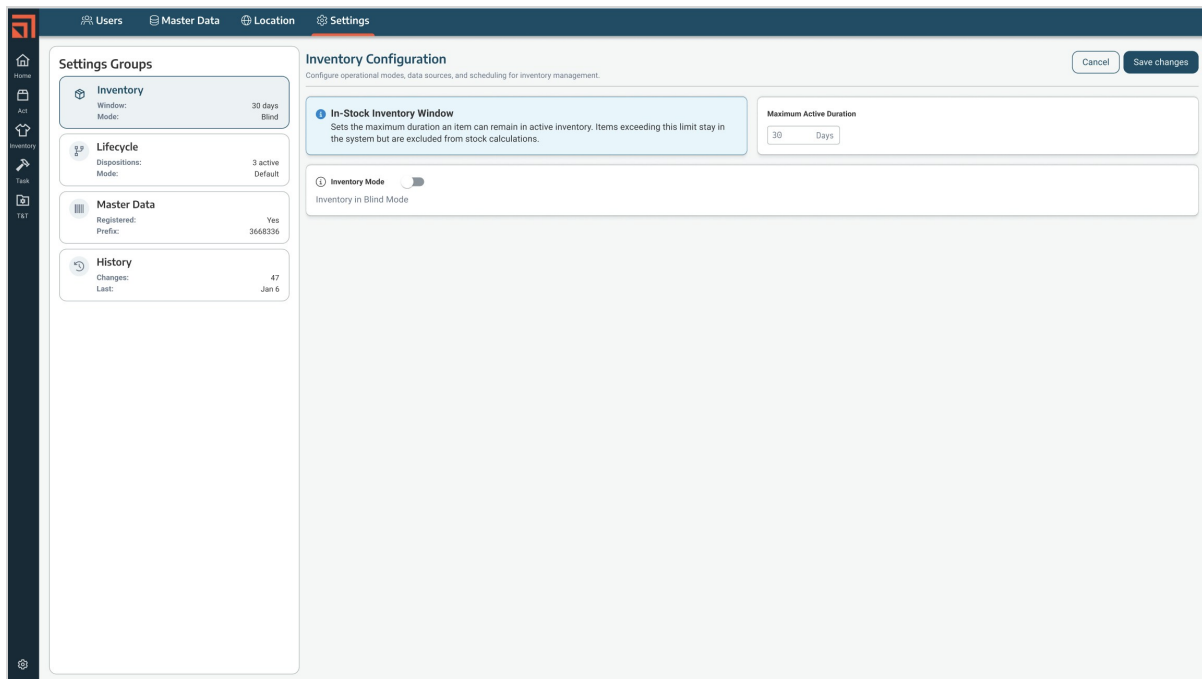
The new or improved features available in BarTender Track & Trace are:

- [Settings Dashboard: Global View and Inventory Settings](#)
- [Location Management: Map and Zone Management](#)
- [Inventory API: Public Inventory Snapshot and Analytics Access](#)

Settings Dashboard: Global View and Inventory Settings

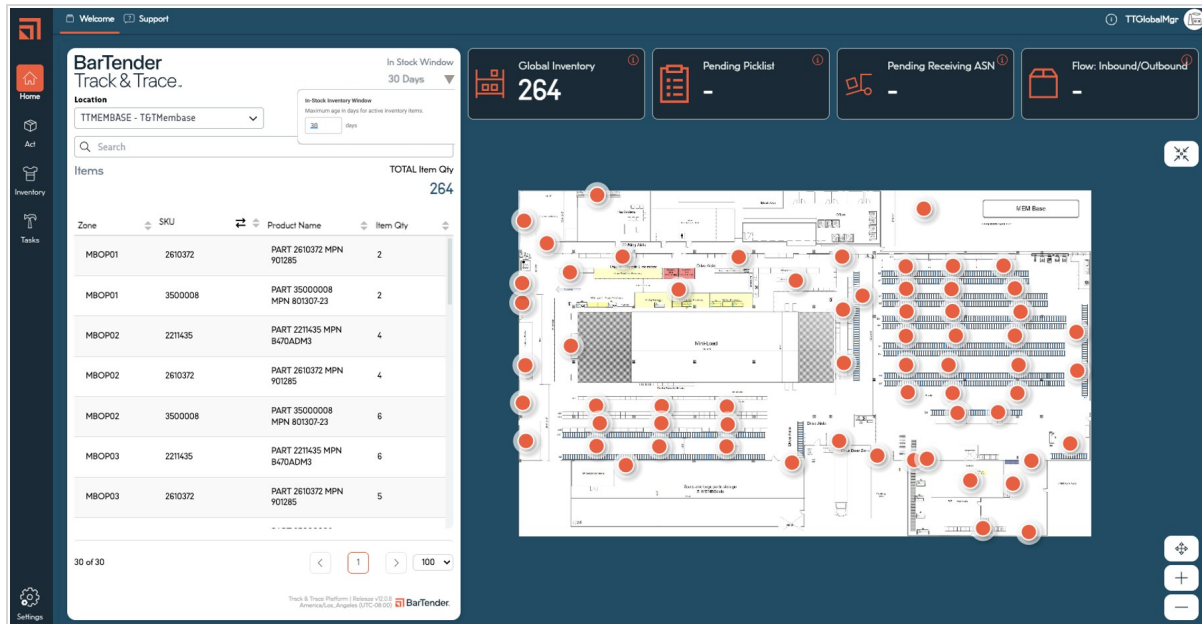
Inventory visibility and operational reporting depend on consistent configuration across locations and workflows. When inventory calculation rules and homepage behaviors are managed through backend processes or fragmented settings, operational teams may experience inconsistencies in stock visibility, audit interpretation, and tenant-level configuration management.

The Settings Dashboard: Global View and Inventory Settings capability provides a centralized settings experience for managing tenant-level inventory behaviors and homepage configuration.



Managing tenant-level inventory behavior requires consistent visibility, controlled access, and clear configuration options. This update provides a dedicated configuration workspace with grouped settings views, role-based visibility controls, configurable inventory window management, and summary cards that display key operational settings.

Authorized users can review key operational settings, manage inventory window behavior, and adjust inventory calculation settings from the configuration dashboard or the homepage inventory view.



Role-based access restrictions help protect configuration settings from unintended changes while maintaining visibility for users who need awareness of current tenant behavior. Default inventory settings applied during tenant provisioning also help establish predictable operational behavior from the start.

Benefits

Centralized Configuration Visibility

A unified settings dashboard provides a consolidated view of inventory settings.

Controlled Administrative Access

Role-based edit restrictions help reduce unintended configuration changes while maintaining read-only visibility for operational users who require awareness of current settings.

More Accurate Inventory Representation

Configurable inventory windows allow organizations to define how long items remain part of active stock calculations, improving alignment between operational activity and reported inventory visibility.

Consistent Tenant Initialization

Default inventory settings applied during tenant provisioning establish predictable operational behavior from the start, reducing the need for manual configuration adjustments.

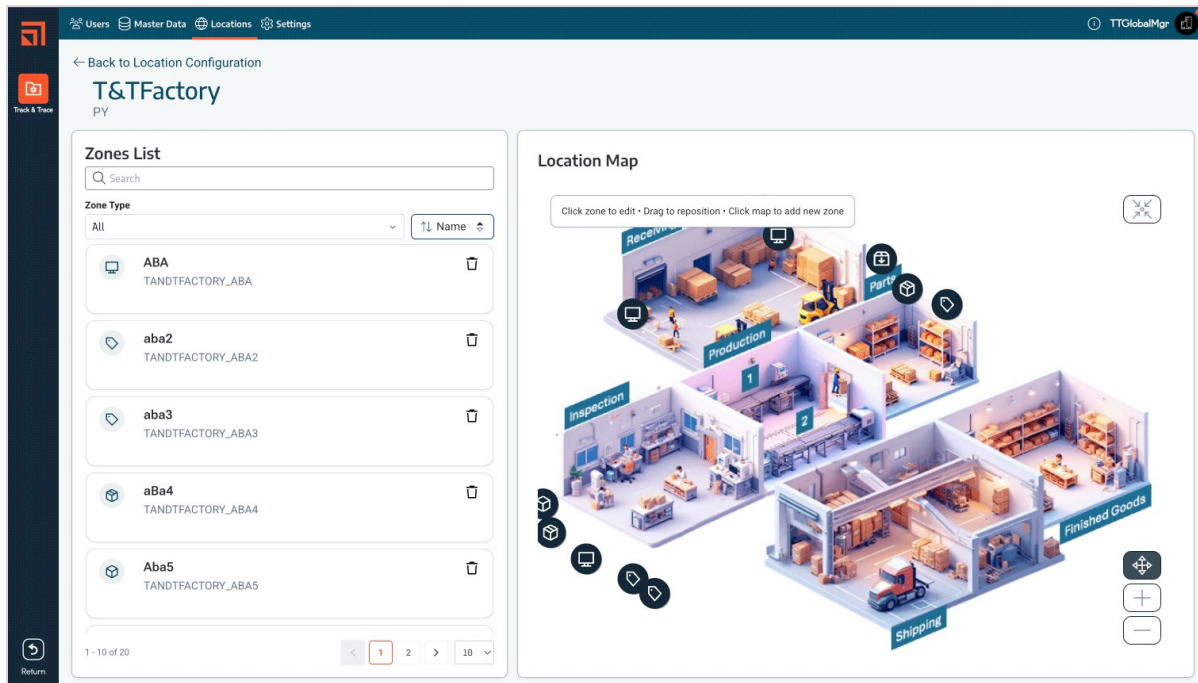
Improved Operational Flexibility

Direct adjustment of inventory window settings from the homepage supports faster adaptation to changing operational requirements and inventory aging policies.

Location Management: Map and Zone Management

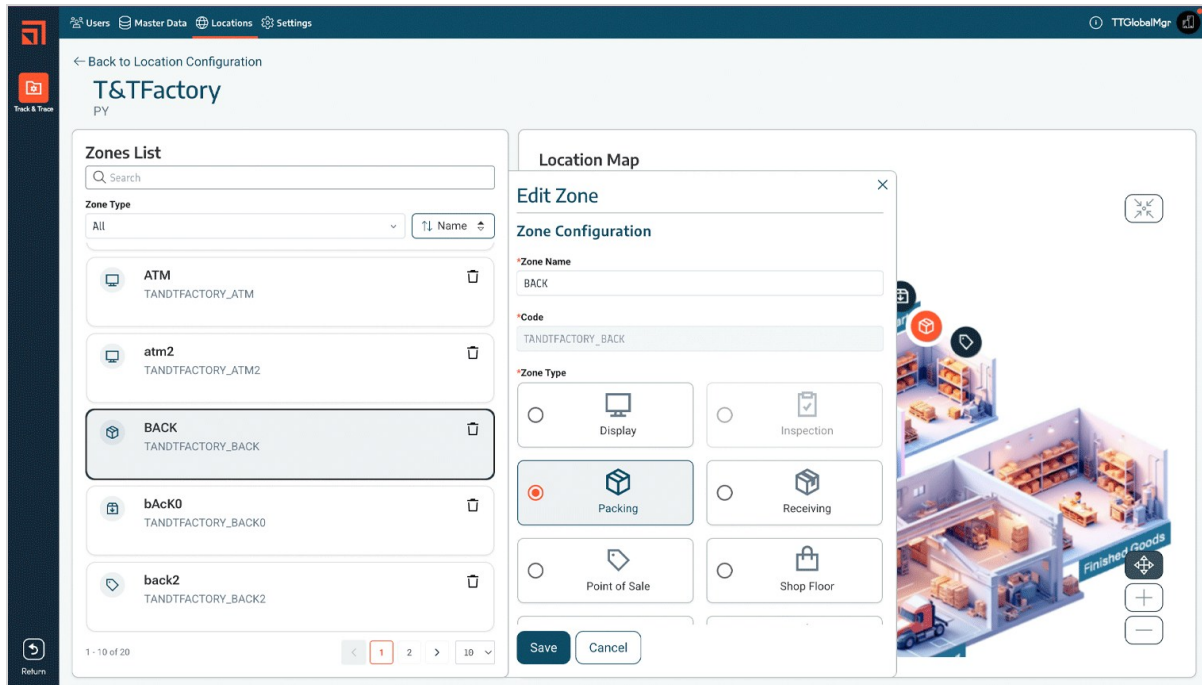
Managing operational locations and their internal zones is important for organizations that depend on inventory visibility, movement tracking, and location-based workflows.

The Location Management: Map and Zone Management capability provides map-based site visualization and operational zone management for configured locations.



Distributed environments require consistent tools for configuring maps, operational zones, and site structures. This update helps organizations define how facilities are organized for receiving, storage, shipping, inspection, display, and sales-related activities.

Authorized users can upload facility maps, define and manage zones directly within mapped locations, classify zones by operational purpose, navigate maps with interactive controls, and manage locations and zones through import and export capabilities.



The update also adds search, filtering, sorting, location deactivation, and zone deletion capabilities to support ongoing administration of large multi-site environments while preserving historical traceability information.

Benefits

Visual Site Configuration

Interactive location maps provide a clearer operational view of facilities and internal zone structures, improving understanding of how operational areas are organized across locations.

Improved Zone Management

Configurable zone types support operational differentiation between receiving, storage, shipping, inspection, display, and sales-related activities, improving consistency across workflows and reporting.

Faster Facility Setup

Map upload capabilities and CSV-based import processes reduce the manual effort required to configure locations and operational zones across large environments.

Enhanced Operational Navigation

Search, filtering, sorting, and map navigation controls improve visibility and accessibility when managing high numbers of locations and zones.

Controlled Lifecycle Management

Zone deletion and location deactivation capabilities support ongoing operational maintenance while preserving historical traceability information.

Better Multi-Site Visibility

Global map views and location summaries provide centralized visibility into active operational locations and their associated configurations.

Operational Flexibility

Interactive zone positioning and editable map-based configurations allow operational layouts to evolve alongside changing facility requirements.

Inventory API: Public Inventory Snapshot and Analytics Access

Organizations frequently require external access to inventory snapshots and aggregated inventory analytics to support reporting, operational monitoring, and integration with enterprise business systems.

The Inventory API: Public Inventory Snapshot and Analytics Access capability expands external inventory visibility through public access to inventory snapshots and configurable inventory analytics aligned with Track & Trace inventory calculations.

Access to consistent inventory information is important for organizations that rely on reporting platforms, enterprise applications, and operational monitoring tools. This update provides inventory data that aligns with the same calculation logic used throughout Track & Trace dashboards and inventory views.

The API supports retrieval of current inventory quantities, grouped inventory views, filtered inventory snapshots, CSV exports, and aggregated inventory analytics across locations, products, categories, and zones. This release also expands publicly available documentation and integration guidance through the [Track & Trace API Repository](#).

```
curl --request POST \  
  --url 'https://api.bartender-tt.com/inventory/stock/analytics?apiKey=123' \  
  --header 'Accept: application/json' \  
  --header 'Content-Type: application/json' \  
  --data '{  
    "inStockWindowDays": 14,  
    "filters": [  
      {  
        "field": "location.code",  
        "operator": "eq",  
        "values": [  
          "SITE01"  
        ]  
      }  
    ],  
    "dimensions": [  
      "product.sku",  
      "product.label",  
      "category.ll"  
    ],  
    "metrics": [  
      "itemsQty"  
    ],  
    "sortBy": {  
      "itemsQty": "DESC"  
    }  
  }'
```

The new capabilities provide greater flexibility for reporting, analytics, and integration scenarios while helping ensure consistency between operational dashboards and external inventory reporting systems.

Benefits

Consistent Inventory Visibility

Inventory snapshots and analytics queries align with the same calculation logic used within operational dashboards, reducing discrepancies between platform views and external reporting systems.

Expanded Reporting Flexibility

Aggregated inventory analytics support multiple grouping and filtering models, improving the ability to analyze inventory across products, locations, categories, and operational zones.

Improved External System Integration

Public inventory access capabilities support integration with reporting platforms, ERP environments, operational monitoring solutions, and business intelligence tools.

Reduced Manual Reconciliation Effort

Consistent inventory calculations across operational dashboards and exported inventory data reduce the need for manual validation and reconciliation activities.

Operational Data Accessibility

CSV export capabilities provide easier access to inventory snapshots for offline analysis, operational reviews, and external reporting processes.

Scalable Inventory Analysis

Query-based inventory analytics enable organizations to retrieve focused operational metrics without relying exclusively on static dashboard views.

Improved Developer Adoption

Publicly accessible documentation and integration guidance provide clearer onboarding paths for inventory-related integrations and reporting workflows.

Related Documentation

Technical Documents

To view and download technical documents, visit:

<https://www.bartendersoftware.com/resources/library>

Support Articles

- [Getting Started with BarTender Track & Trace](#)

Other Resources

- Please visit the BarTender website at <https://www.bartendersoftware.com>.

bartendersoftware.com

© 2026 Seagull Software, LLC. BarTender, IntelligentTemplates, Drivers by Seagull, the BarTender logo, and the Drivers bySeagull logo are trademarks or registered trademarks of Seagull Software, LLC. All other trademarks are the propertyoftheir respective owners.

Version 6/15/2026