
What's New

BarTender Cloud – Release 11.11

December 2025

Contents

- Overview 3**
- Link Eligible Printers Directly to BarTender Cloud 4**
 - Using BarTender Cloud to Connect a Weblink-Enabled Printer 4
 - Using the Zebra Printer Setup Utilities Mobile Application 5
- External Authentication Expanded 7**
- Related-Field Support for Microsoft Business Central 9**
- Related Documentation10**

Overview

With the 11.11 update to BarTender Cloud, Seagull Software continues to enhance your design and printing experience, and to provide easier ways to manage and administer your print operations. This What's New document describes the most significant features that were added or improved in this update.

BarTender Cloud 11.11 release notes are available on the online [BarTender Support Center](#).

The new or improved features available in BarTender Cloud are:

- [Link Eligible Printers Directly to BarTender Cloud](#)
- [External Authentication Expanded](#)
- [Related-Field Support for Microsoft Business Central](#)

Link Eligible Printers Directly to BarTender Cloud

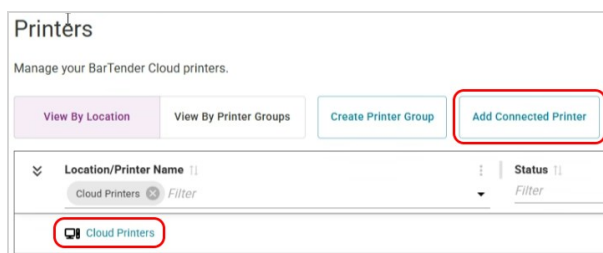
You can now connect weblink-enabled printers directly to BarTender Cloud from the Printers page. When a weblink-enabled printer, such as a Zebra printer using Zebra DNA, is connected, the user can print a label directly on the printer, bypassing the Print Gateway entirely when printing.



For this release, contact support to have them activate this feature in your tenant.

Using BarTender Cloud to Connect a Weblink-Enabled Printer

Click **Add Connected Printers** on the Printers page to set up a linked printer.



In the Add Connected Printer dialog, select the vendor whose printer you want to link, then click **Start Discovery**.



Refer to Using the Zebra Printer Setup Utilities Mobile Application below for more specific information about the Discovery process, or see Zebra's [Using Weblink](#) and [Basic Configuration](#) pages.



The Discovery process searches for all weblink-enabled printers and produces a list of all eligible printers for the selected vendor. There is no need to add any additional information manually.

Once the list of printers is displayed, simply select the target printer from the list to add it. Once the printer has been linked, it appears in the Cloud Printers section of the Printers page.



For more detailed information, refer to [Adding a Linked Printer](#) in the BarTender Cloud help.

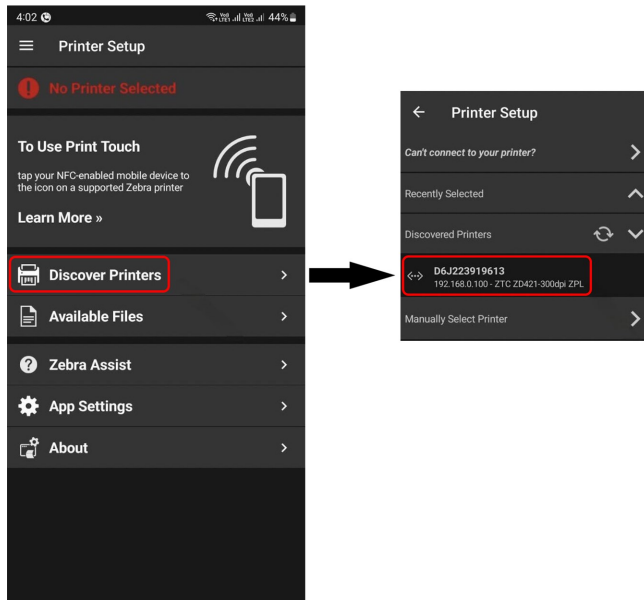
Using the Zebra Printer Setup Utilities Mobile Application

To install Zebra Printer Setup Utilities

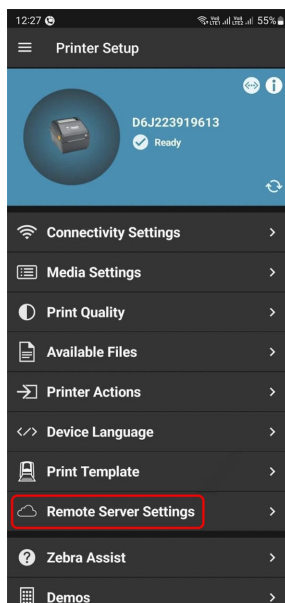
1. Install and open Zebra Printer Setup Utilities on your cell phone.

Download the Utilities file [here](#).

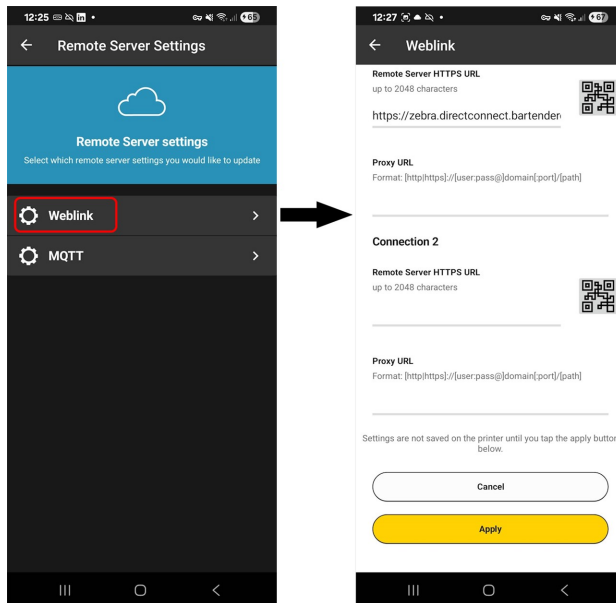
2. On the mobile device, tap **Discover Printers**.



3. Tap **Remove Server Settings**.



4. Tap **Weblink** to scan the QR code on the web page, either Connection 1 or Connection 2.



Once scanned, the URL is entered into the app.

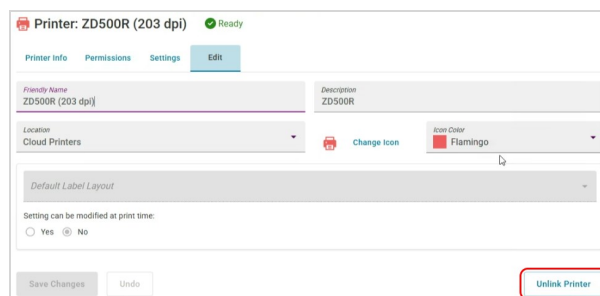
5. Click **Apply**.



This feature currently works with Zebra ZT411, ZD500, and ZD621 printers, or any Zebra model that has the weblink feature *and is included in the BarTender's universal driver*. More printers will be added in future releases.

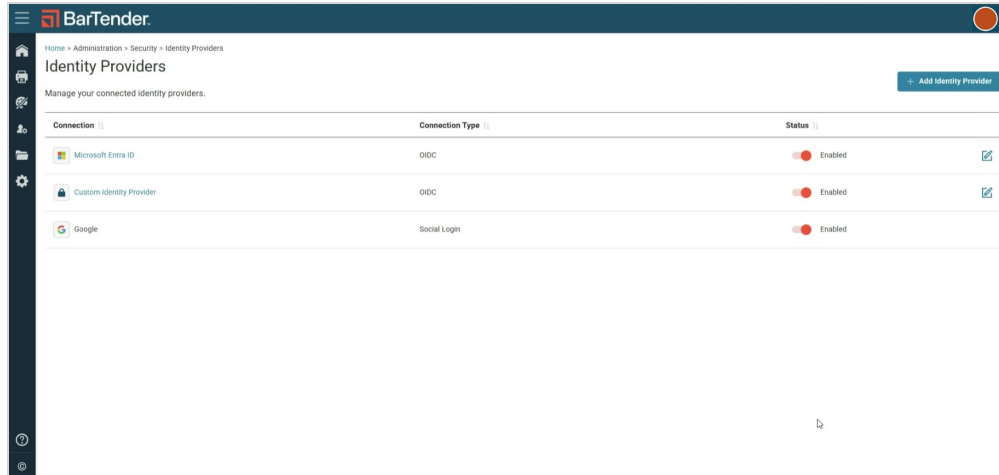
For a list of Zebra printers that are currently compatible with this feature, go [here](#).

If you no longer use a linked printer, unlinking it is simple. On the Edit tab of the Printer Details page for the linked printer, just click **Unlink Printer**.

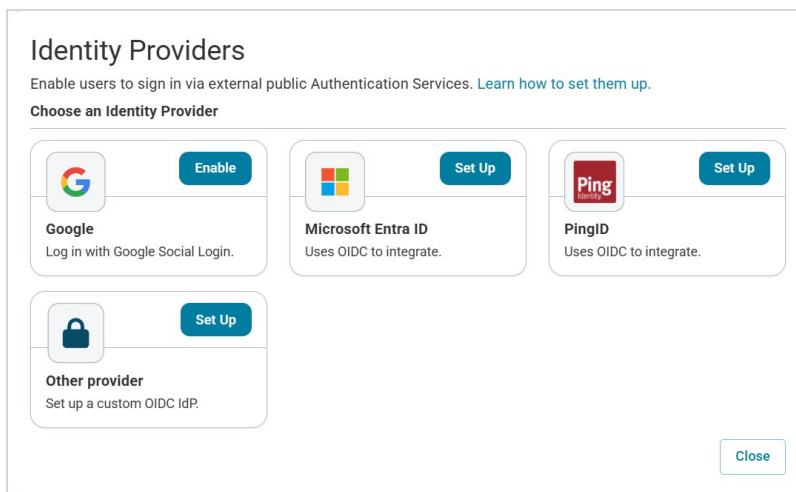


External Authentication Expanded

Users can now use more external authenticators to control access to BarTender Cloud. In addition, BarTender Cloud now has a dedicated space for creating and managing external authentication connections. Users can access this page under Administration > Security > Identity Providers.

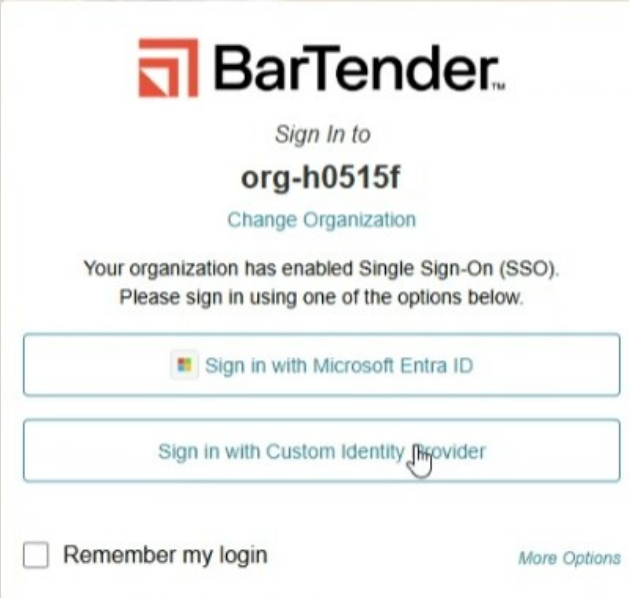


From this new page, users are able to select one of the existing identity providers like PingID or Entra ID, or they can create a custom OIDC provider.



Enter a few simple values like the Default Role, which will be assigned to every new connection created for this provider, or Client ID and Client Secret, which are assigned by the identity provider.

Once a connection has been established, a user can use it to sign into BarTender Cloud quickly and simply.




The image shows a login interface for BarTender Cloud. At the top is the BarTender logo, consisting of a red square icon with a white stylized 'B' and the word 'BarTender' in black. Below the logo, the text 'Sign In to' is followed by 'org-h0515f' in bold. A link 'Change Organization' is positioned below the organization name. A message states: 'Your organization has enabled Single Sign-On (SSO). Please sign in using one of the options below.' There are two large, light blue rectangular buttons. The first button contains a small Microsoft Entra ID icon and the text 'Sign in with Microsoft Entra ID'. The second button contains the text 'Sign in with Custom Identity Provider'. A mouse cursor is pointing at the second button. At the bottom left, there is a checkbox labeled 'Remember my login'. At the bottom right, there is a link 'More Options'.

BarTender

Sign In to
org-h0515f
[Change Organization](#)

Your organization has enabled Single Sign-On (SSO).
Please sign in using one of the options below.

 Sign in with Microsoft Entra ID

Sign in with Custom Identity Provider

☐ Remember my login [More Options](#)

Related-Field Support for Microsoft Business Central

Related-field support in the Microsoft Business Central connector enables labels that include complex data relationships. These labels can use multiple related fields to pull data from multiple tables, even if related tables have no matching rows. This eliminates redundant data entry and reduces errors by pulling data directly from the authoritative source, and it supports common labeling scenarios such as serialized, compliance, and branding without forcing users to pre-merge data outside BarTender Cloud.

Microsoft Business Central connects to multiple tables within the same database using pre-defined relationships, such as product ID, order number, or batch code. The connector always returns the base record for printing. Related fields are populated when matches exist and remain empty/null when they don't. Label fields are automatically filled from the base and related tables at print time.

Related Documentation

Technical Documents

To view and download technical documents, visit:

<https://www.bartendersoftware.com/resources/library>

Manuals

- [Getting Started with BarTender Cloud](#)

BarTender Cloud Help System

- [BarTender Cloud](#)
- [Managing Your Files](#)
- [Printing Documents](#)

Other Resources

- Please visit the [Getting Started with BarTender Cloud](#) page on the BarTender Support Portal website.
- Please visit the BarTender website at <https://www.bartendersoftware.com>.

bartendersoftware.com

© 2025 Seagull Software, LLC. BarTender, Intelligent Templates, Drivers by Seagull, the BarTender logo, and the Drivers by Seagull logo are trademarks or registered trademarks of Seagull Software, LLC. All other trademarks are the property of their respective owners.